



BUCCELLATI

MILANO DAL 1919

TIMELESS BEAUTY



BUCCELLATI

MILANO DAL 1919

Buccellati

A century of talent and passion

Tradition, skills and excellence in handcrafting, creativity and the highest quality materials: these are the values that have always been central to Buccellati, a long-established family firm that creates Italian-designed jewellery and which has preserved its stylistic identity for a century by reviving centuries-old goldsmithing traditions in the top end of the jewellery market.

Mario Buccellati (1891-1965), the founder of the family business, did his apprenticeship at a very young age at the famous jewelers and goldsmith's Beltrami & Besnati, where he was fascinated by all of the metals and stones and the use the craftsmen made of them. The young man dreamt of forgotten antique techniques that dated back to ancient Greece or the middle Ages, or to his favourite period, the Renaissance.

In 1919, he opened his first jewellery store in Milan, on Largo Santa Margherita, near the famous La Scala Theatre. He revived and emphasized the use of ancient tools and traditions to bring his creations into being. Though enthused by the style of ancient periods, he never sought to imitate the jewels of the Renaissance era, but rather to interpret it. Each of his creations held a rich textural quality and resembled sumptuous fabrics, delicate damasks and Venetian laces. Age-old engraving and chiselling techniques were incorporated into a mix of precious stones and metals for an unusual yet extraordinary combination.

He had a knack for drawing and an inquisitive mind, so he quickly became one of Italy's highly respected jewellers and goldsmiths of the period

and garnered a prestigious clientele, and among his clients the famous "literary dandy", Gabriele d'Annunzio, coined for him the name "The Prince of Goldsmiths". Soon he started to work for various royal families (of Spain and Egypt) and supplied ornamental objects to The Pope and the great cardinals of Rome.

Mario Buccellati also had some very entrepreneurial skills and, considering his success at Italian level, he decided to spread the business and, in 1925, he opened two additional stores, one in Rome and one in Florence.

In 1951, Mario decided to expand the House of Buccellati internationally and ventured into the American market: he opened his first store on 51st Street, in the heart of New York City, and a few years later, in 1954, he went on with a second branch on 5th Avenue and inaugurated a seasonal shop on the famous Worth Avenue in Palm Beach.

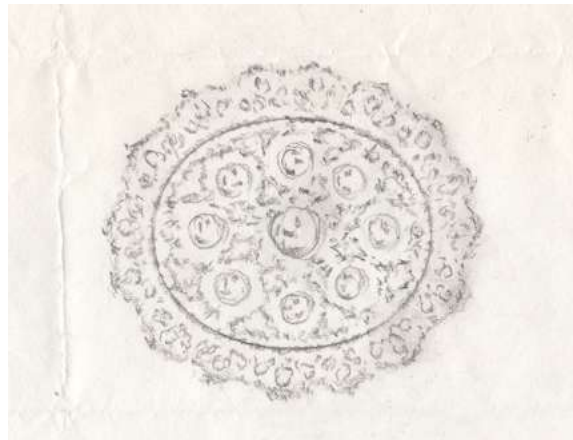
When Mario Buccellati passed away, in 1965, four out of his five sons took over the family business, but among them all only Gianmaria passionately learned the meticulous craftsmanship (and notably the driving force) behind Buccellati, as he started to work as an apprentice with his father from his very young age, following his footsteps.

In 1966 Gianmaria (1929) took over the management of the workshops and the creative side of the company: he conceived and designed every piece coming out of his ateliers, just like they are still doing today. He worked with his



brother Luca, sharing with him the vision of creating Buccellati into a worldwide jewelry powerhouse. While Luca developed the business in the United States, Gianmaria managed the workshops and was responsible for the design and production of the company.

The long run had started: after a long period of collaboration with his brother Luca, Gianmaria decided to part and at the same time he gave new impulse to the development of his company: a pioneer like his father in the US, Gianmaria is the first Italian jeweller to set up a shop in Hong Kong in 1970, followed by Tokyo, Osaka and Nagoya in the next few years. And the run never stops: Gianmaria decides to redevelop his business in Europe and in 1979 the brand becomes the first Italian one to launch a boutique in the world-famous place Vendôme, where all the jewellery gothas are present.



Since then, the possibilities of expansion have considerably grown and developed, and in all these years Gianmaria has always been flanked by his son Andrea, who has inherited his father's artistic talents and who supervises all jewellery creation steps in the Milan ateliers and headquarters. Since 2013, Andrea is President of the Buccellati Group. Just like in a fairy tale, where all the good things survive to evil and are passed down from father to son, Andrea is today supported o by his daughter Lucrezia, a young woman and mother living in New York and supplying new inspirations and trends to the brand's creations.

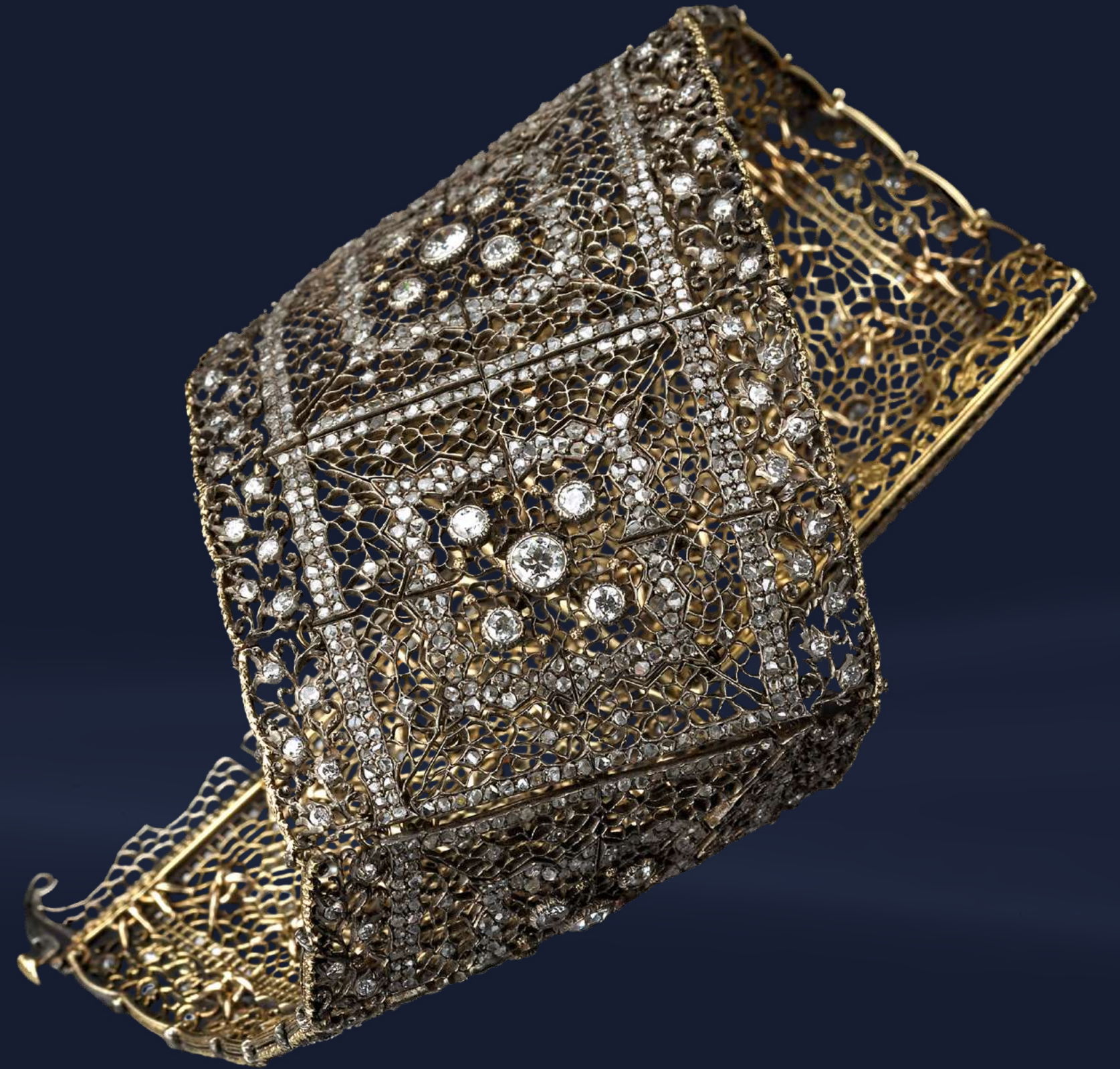
Buccellati is the Italian "bottega" of Renaissance times brought into the 21st century: Mario first, then Gianmaria, and now his son Andrea with his daughter Lucrezia. A touch of tradition and culture into jewellery to create a true excellence, which is now recognized and admired worldwide.



Mario Buccellati (1891-1965), the founder of the House

"Time present and time past
are both perhaps
present in time future,
and time future
contained in time past".

Thomas Stearns Eliot (1888-1965)



Tulle bracelet by Mario Buccellati, 1925. Courtesy of Gianmaria Buccellati Foundation



The Buccellati Workmanship

The craftsmanship of Buccellati jewels is unique and dates back the Italian Renaissance goldsmith's "bottega", the atelier where sumptuous creations took birth and still do, thanks to the dexterity of master artisans.

Today as yesterday, with patience and great manual skills, the craftsmen pierce again and again, up to the smallest and most delicate of pattern, to obtain the honeycomb golden cells composing a Buccellati jewel.

And the extensive use of texture engraving remains one of the most identifiable element of all Buccellati jewels: a precious technique that attracts and gives off the light offering the most beautiful reflection on the surface.



Creating an Eternelle ring is a patient step-by-step process. The artisan starts by creating the gold thin plates that will form the ring, and then he divides all the spaces among the shapes with an engraving compass and draws with some ink the points where he will have to drill.

Once drilled, the plates are soldered to one another. In the "Rombi" Eternelle ring, the two thin white gold plates are used for the borders, while on the previously drilled plate in yellow gold some beads in white gold are applied, thus creating a contrasting effect on the yellow gold surface and adding volume to the surface.

There is a first cleaning phase called "ad ascia", where some cotton threads are soaked with abrasive pastes and all the holes of the object are cleaned and polished, ready for hand-engraving and stone-setting.

Engraving allows all Buccellati jewels to a "silky effect": using the burins requires a huge dexterity and ability, because, like any other manual precision tool, it must be used with the right cutting angle, the right sharpening and finishing. The result is amazing: endless light games, soft and sensual reflections, refined and incomparable particulars.

Before undergoing a quality-check, the ring is cleaned one more time and rhodium-plated, by applying a layer of special enamel protecting yellow gold by the galvanic bath. This final phase shall give the white gold an even more brilliant effect and shall prevent oxidation.

JEWELS

Buccellati jewels are an explosion of beauty, the most ancient and noble goldsmithing tradition becoming a work of art for connoisseurs.

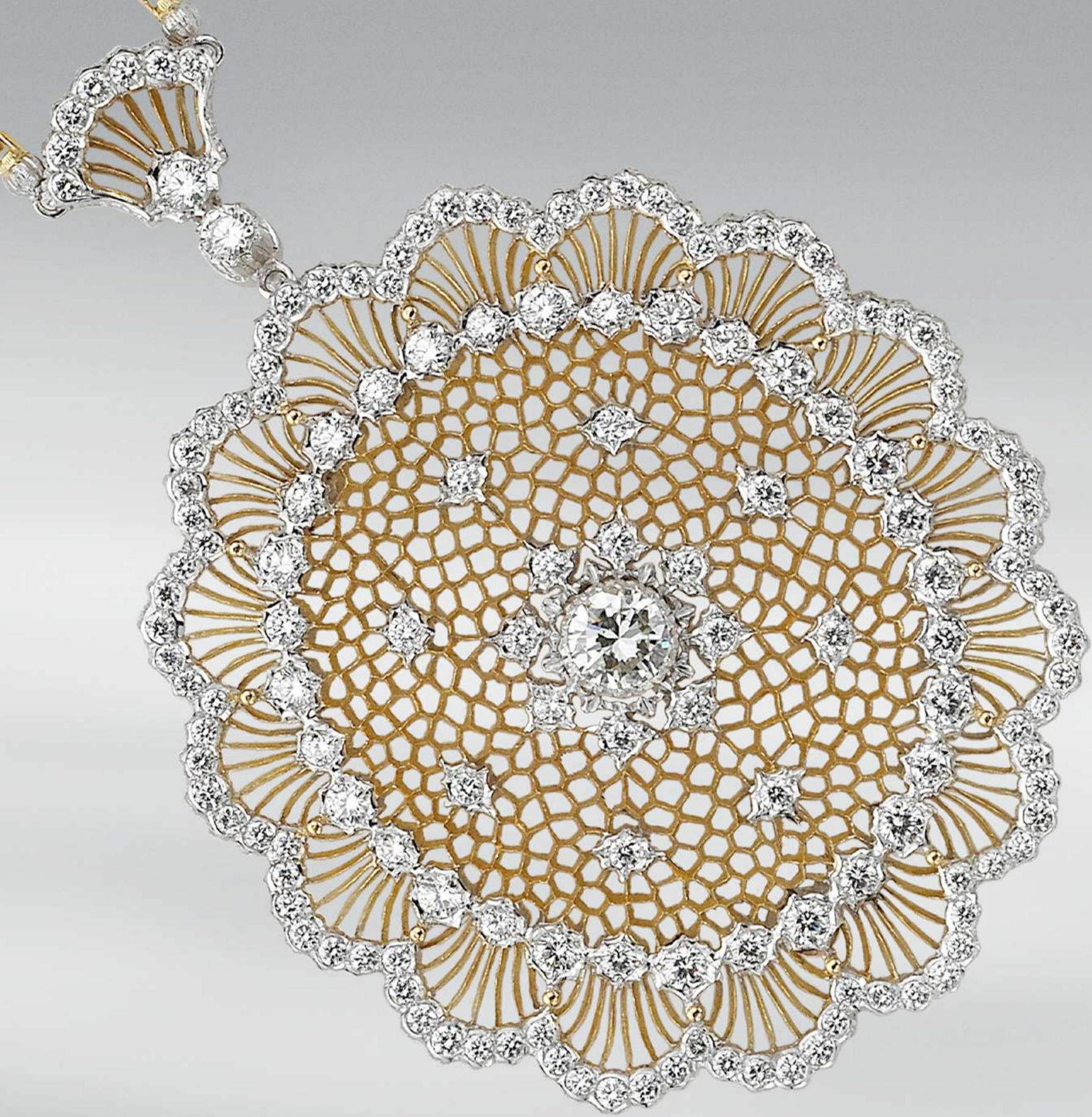
Precious gems and diamonds set in marvelous designs, engraving techniques transforming gold plates into light and elegant fabric-like motifs, silky surfaces capturing the light, and a passionate and feminine look trespassing trends and time.

Buccellati is a style, and each one of its jewels is a milestone.







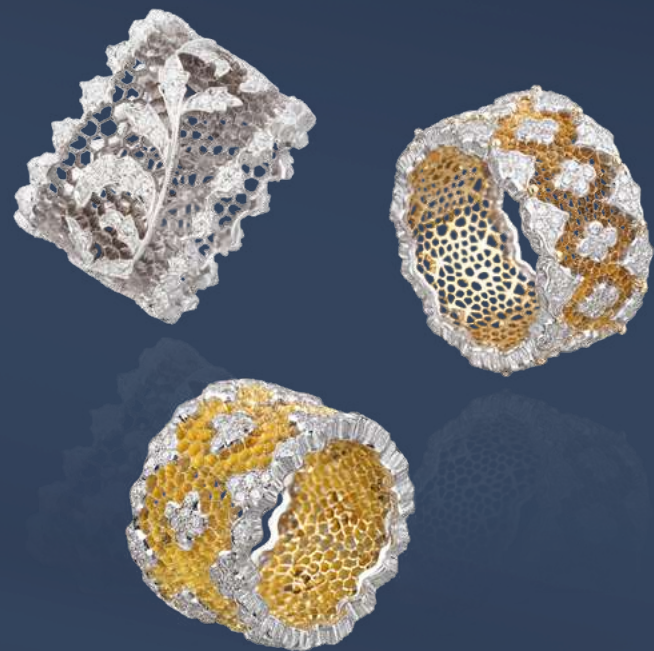
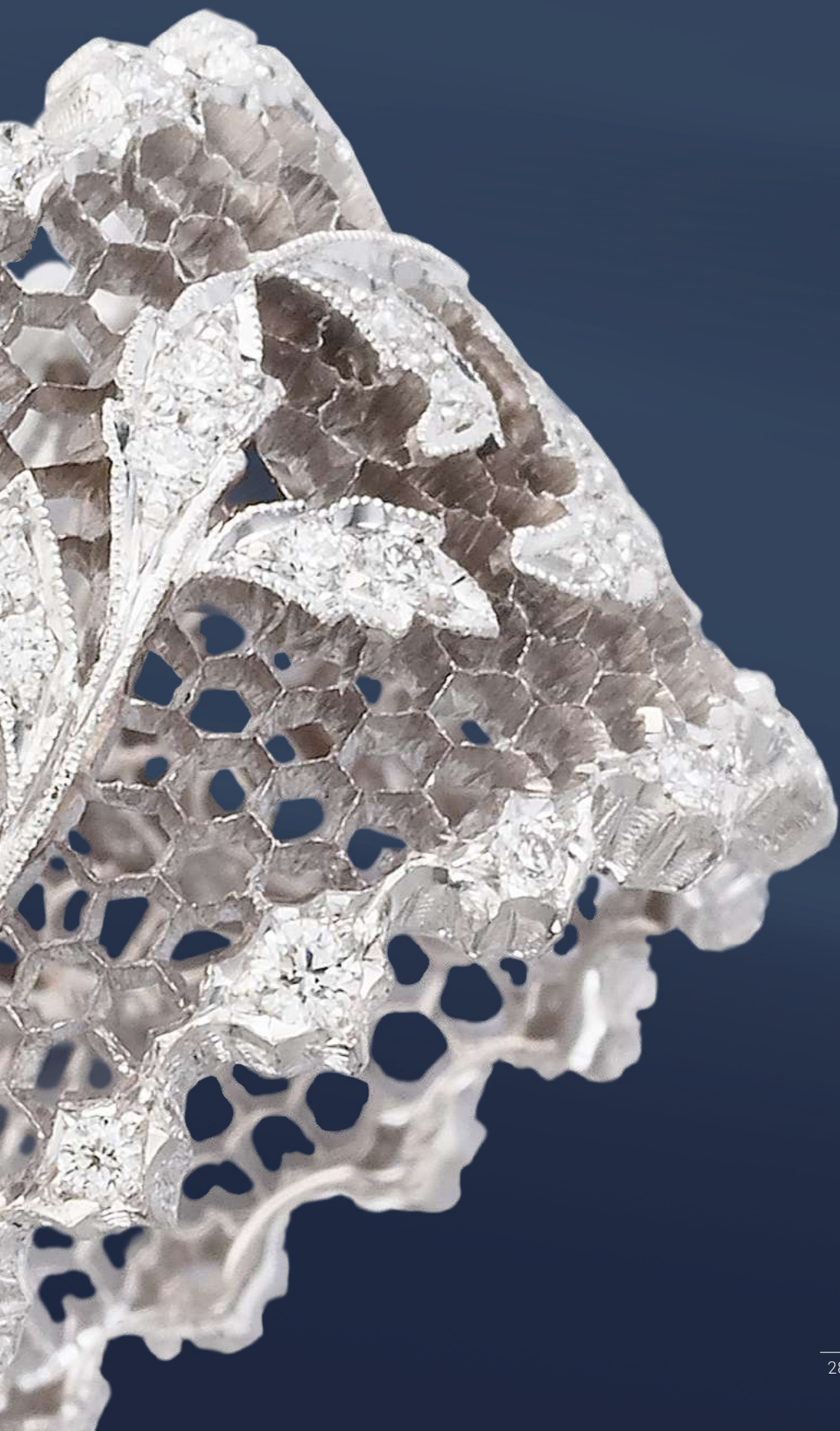








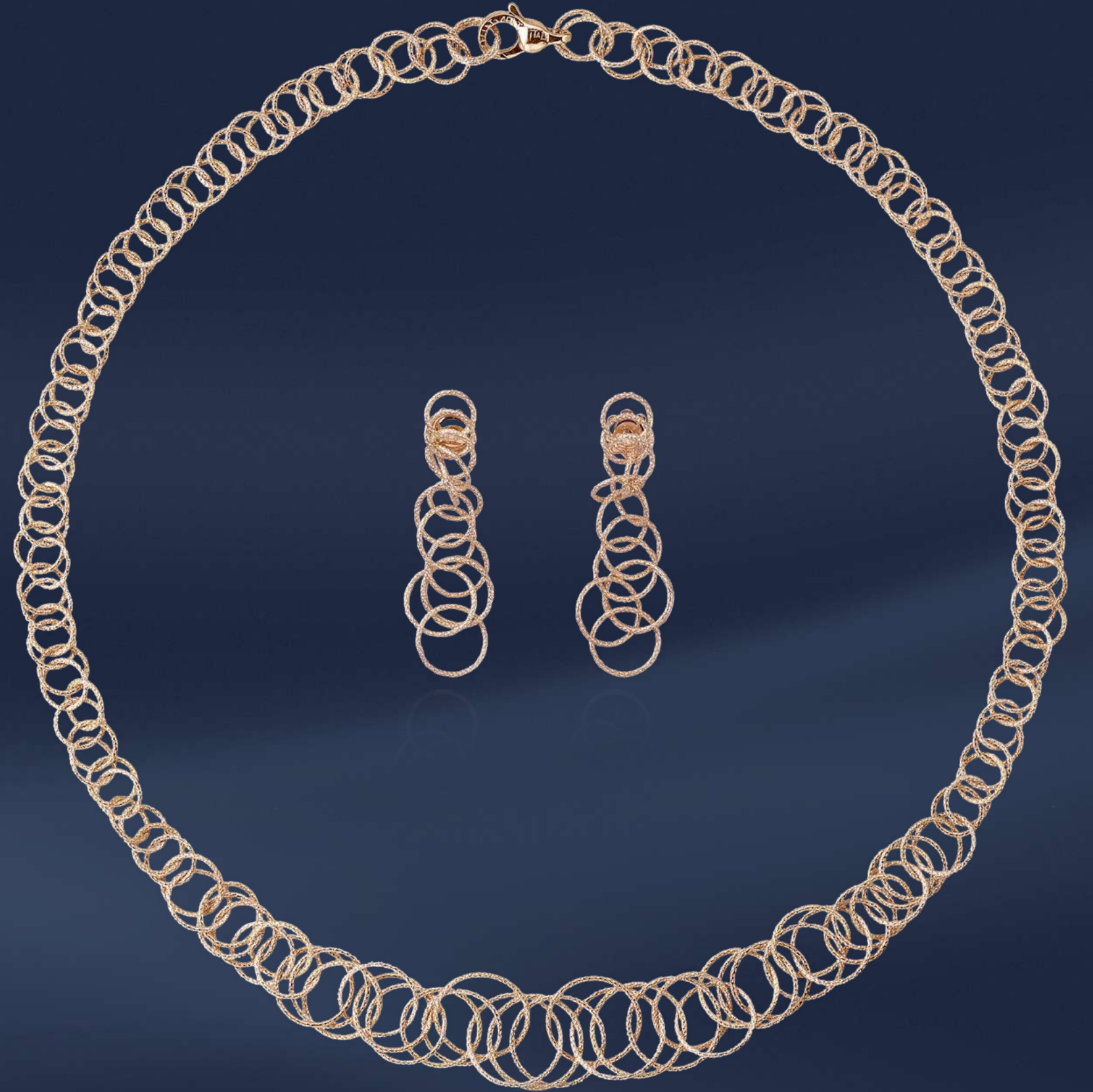
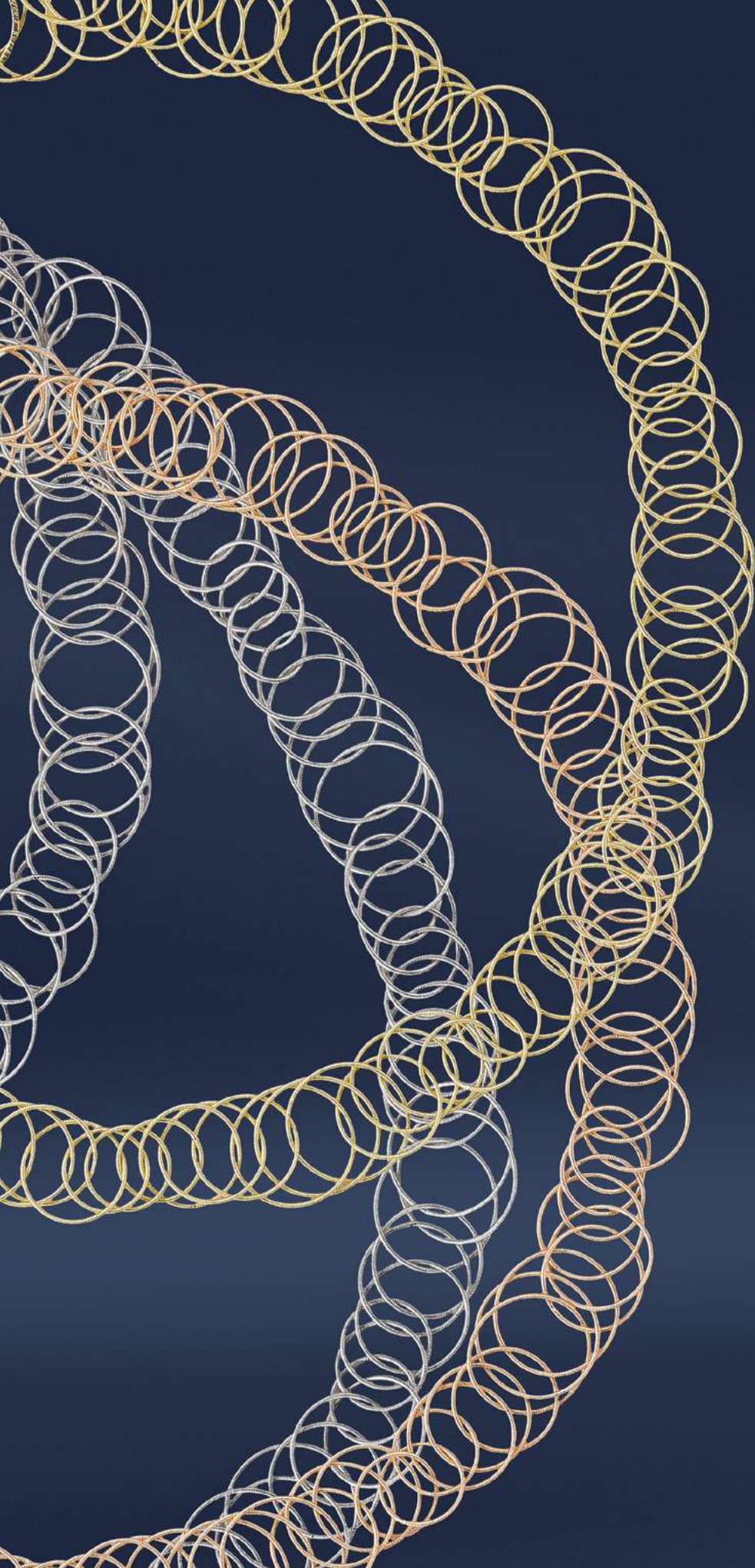




















ROMANZA

The best and most beautiful things in the world cannot be seen, nor touched, but are felt in the heart, and that's why the inspiration of each ring of the Romanza collection comes from Love, the most intangible and inexplicable feelings of all, and it is dedicated to it.

Lucrezia Buccellati has conceived new designs for this collection, then developed by using the traditional workmanship techniques of the House and the engraving techniques that make the uniqueness of every Buccellati jewel.

A Buccellati engagement ring is not a gift for someone you can live with, but for someone you can't live without; it is the seal of a promise, the materialization of a dream, the unspoken words between lovers. All in one.





JEWELLED WATCHES

The jewelled watches have an essential shape that welcomes the setting of diamonds or colored gems as a more precious means of reading time. Perfectly adaptable to all occasions and dress, the jewelled watch magically takes on the personality of the woman who wears it.

The gold maximizes the preciousness of the object and the light of the diamonds enhances the liturgy of time, while the gems exalt a strong personality, made of unmistakable character and brightness.

The superb artisanal mastery confirms once again the height of the Swiss watchmaking art and of the Italian high-end goldsmith's art of Buccellati.











GENTLEMEN

To measure time, it is necessary to decide “when” and “how” to act. Hiding, but always present behind the “when”, is the measurement of time.

The Buccellati watches represent pure perfection, the absolute sublimation of the empiric concept of time measurement, a historic moment; they perfectly combine beauty, sweetness, power and strength.

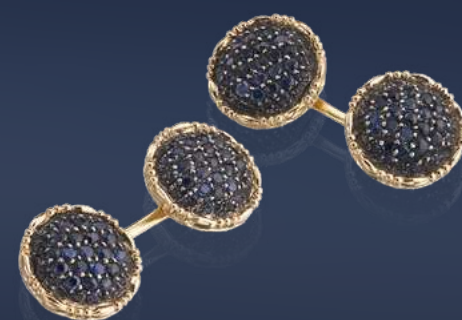
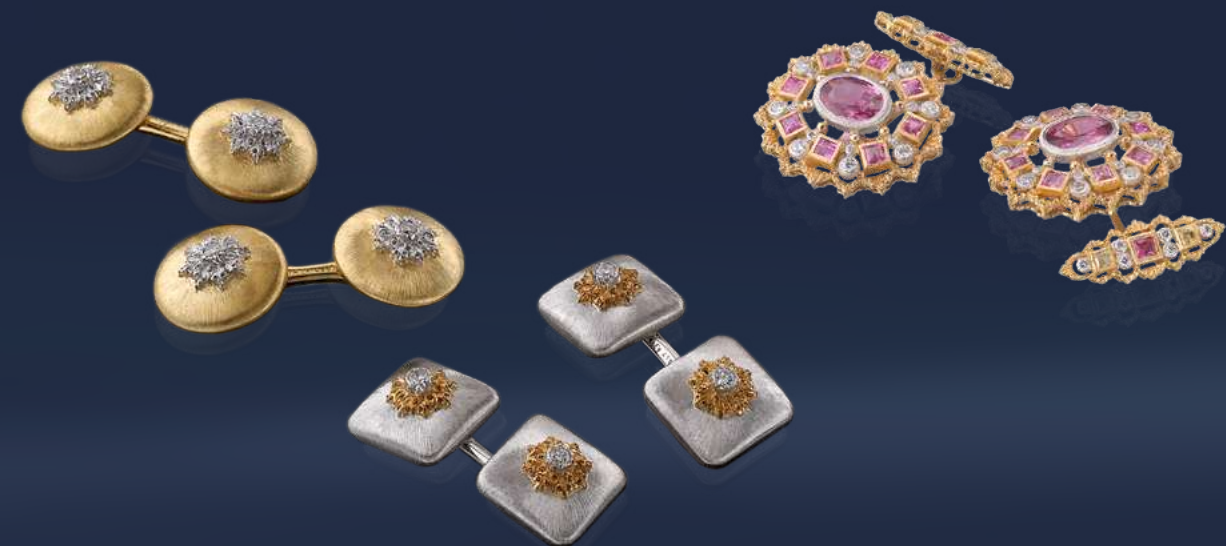
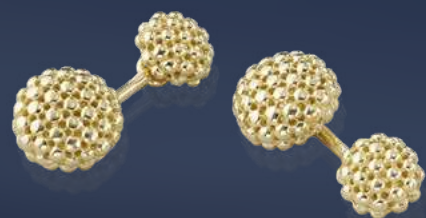
Timepieces expressing a solid tradition and an unforgettable design.

Buccellati also designs and handcrafts some one-of-a-kind cuff-links, both in gold or with precious stones: it is a different proposal to give a hint of eccentricity and elegance to formal dressing and everyday style.











SILVER

Silversmithing is a very old craft and silver, as an aristocrat among materials, has always symbolized status, wealth and dignity.

Buccellati still crafts his silver creations in the manner of ancient master smiths, and he still designs personally every item carrying his name. That's why Buccellati is not a silver factory, rather, it is a silver smithy. At Buccellati, each piece gets the individual attention of a skilled silver smith, who has spent a lifetime perfecting his craft: it takes weeks, often months, to create a Buccellati one-of-a-kind piece.

The giftware collection originally included leaves and flowers, enhanced by frames, caddy spoons, desk accessories and many other items for home and office decoration.





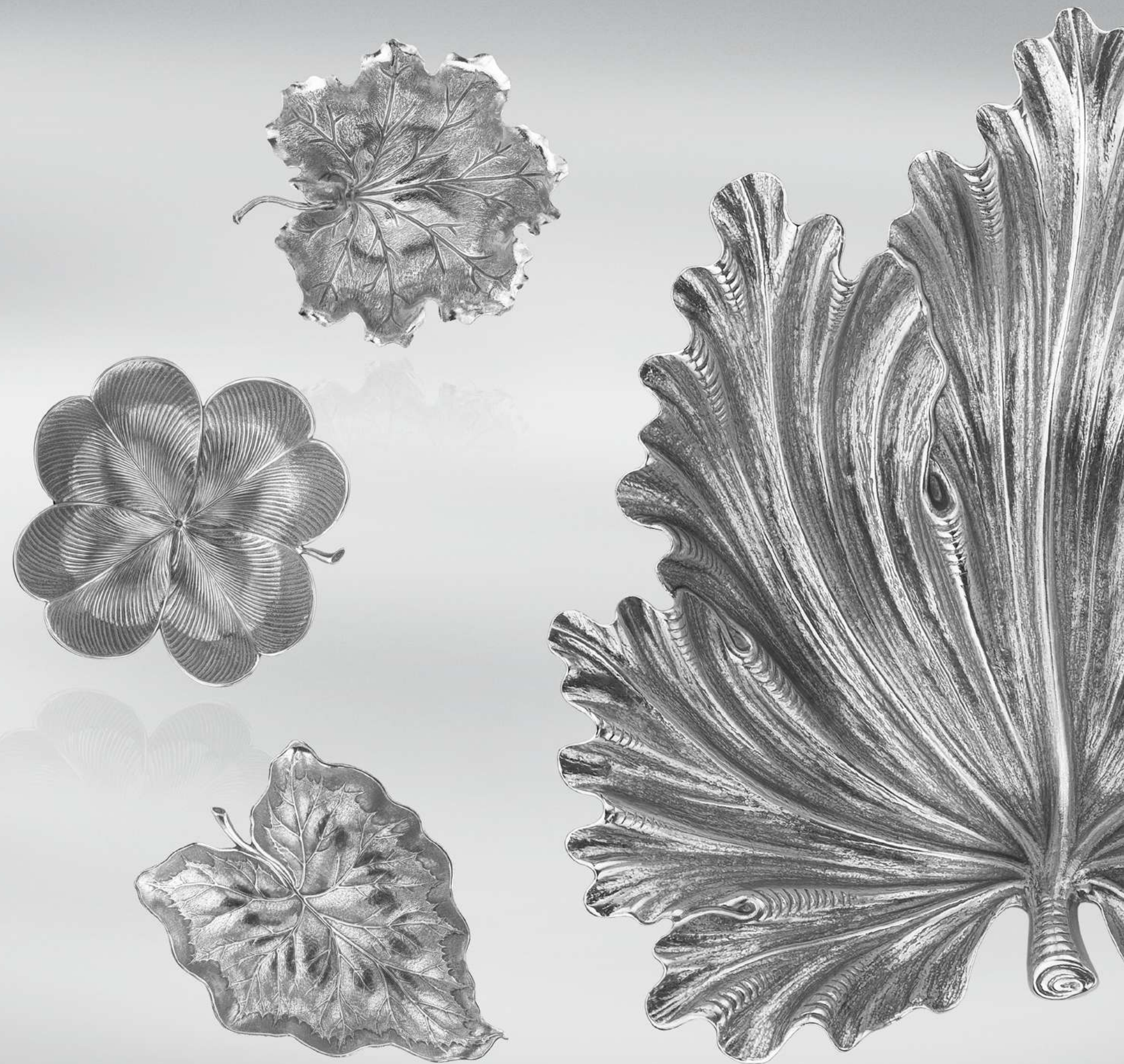


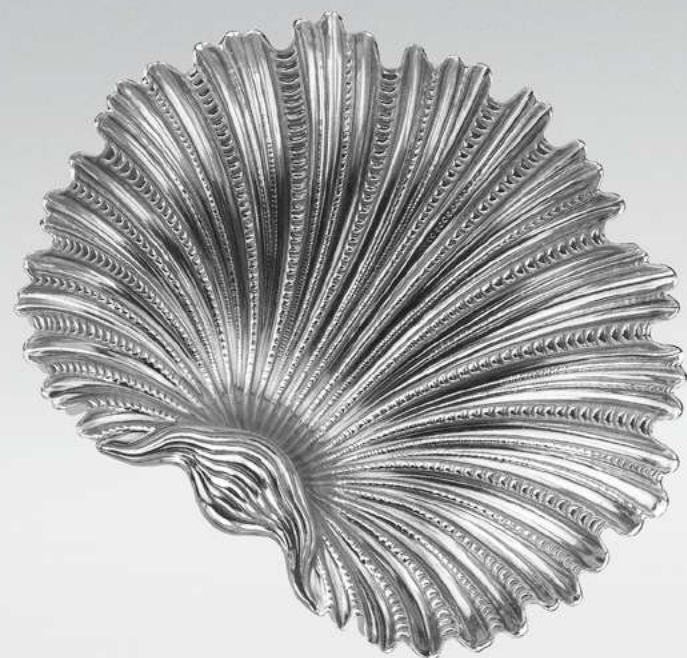




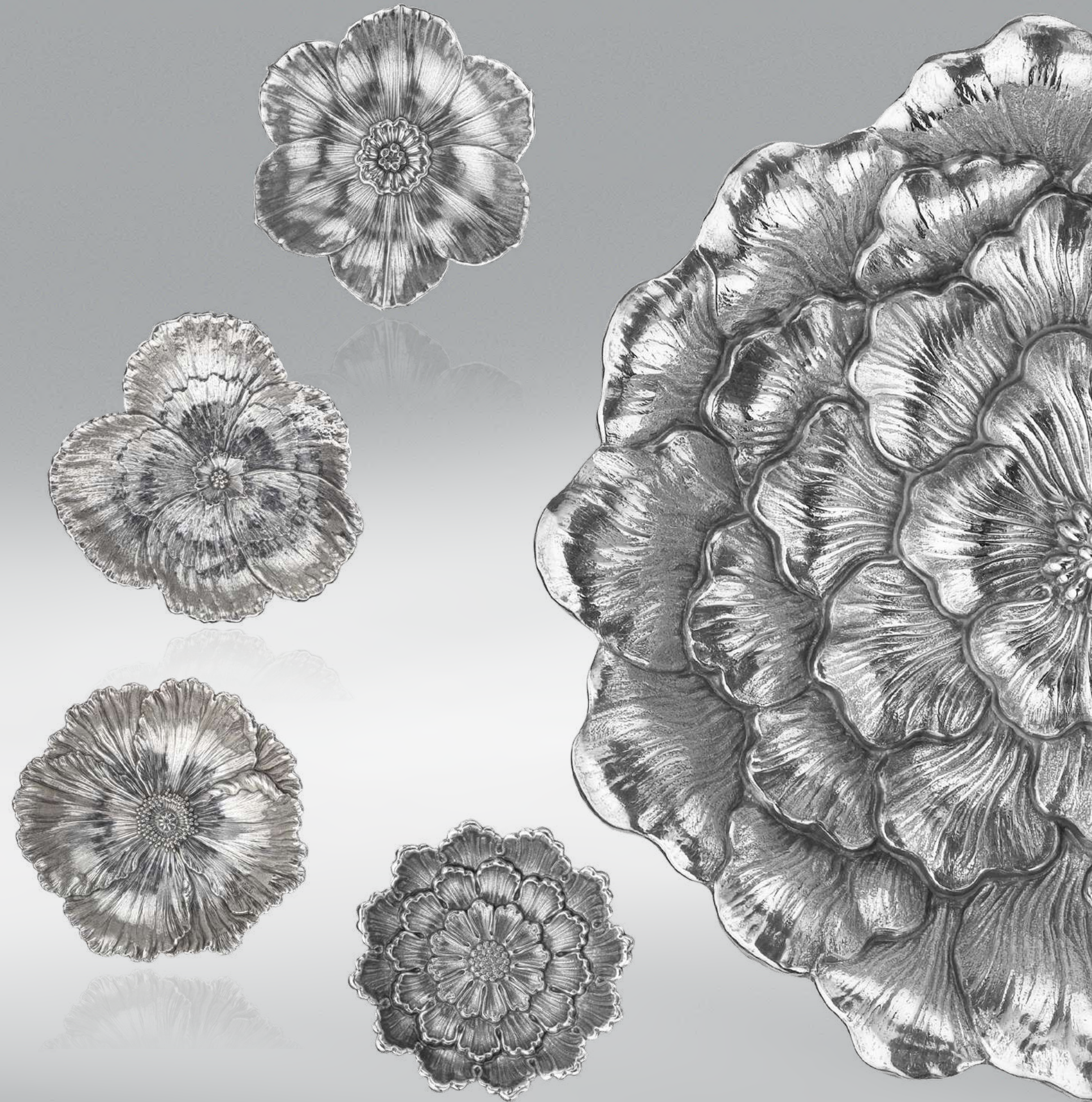














FLATWARE

Today, the Buccellati flatware is famous throughout the world and represents the core of the silver production of the House. The Buccellati flatware is produced with designs and production techniques which are faithful to tradition. Every piece must go through forty steps of workmanship, and this is normal for a brand which has based on "hand-made" products its creed and way of life.

The silver flatware is one of the successful histories for Buccellati. A wide range of patterns is available, starting from very essential designs to the baroque and impressive ones. Each piece is produced to obtain the best quality and refinement, a result to be reached through the work of skillful and passionate artisans.









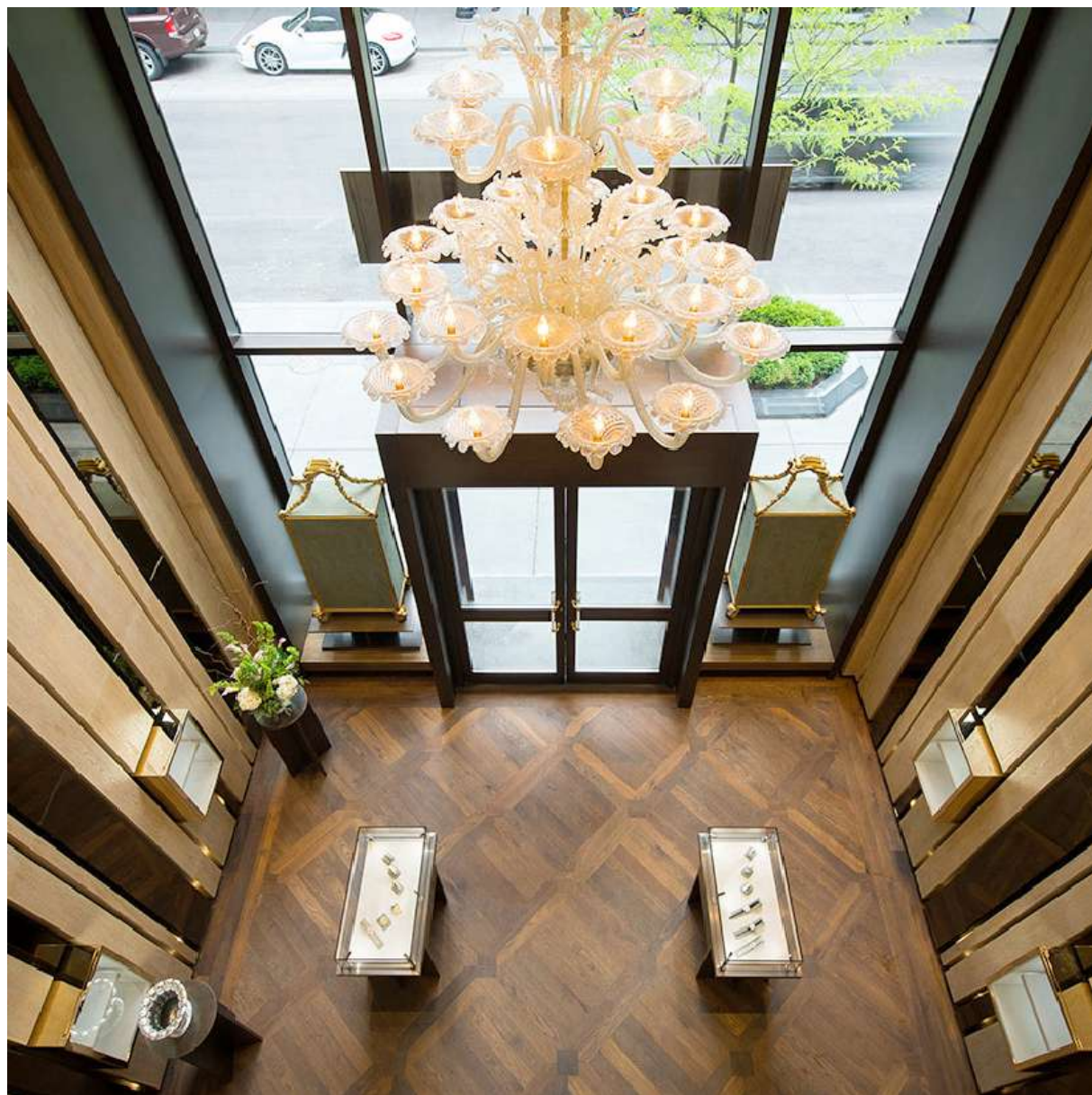
UNICA COLLECTION

Typically inspired by Leonardo da Vinci, Buccellati proposes prestigious I-Phone and I-Pad covers, in engraved gold and diamonds: an unexplored and intrepid frontier, a brave enterprise to conceive new objects embellishing our daily life and gestures.

Above all, it is a challenge aiming to create a perfect marriage between the goldsmith tradition, which is the characteristic Buccellati is world famous for, and the most extreme and widespread technological devices, a true bridge between past and future, that is between the manual workmanship techniques and the evolution of communication.

Every item is unique and one-off, as well as customizable according to the client's tastes.





MILAN
VENICE
FLORENCE
CALA DI VOLPE
CAPRI
PARIS
LONDON
MONTE CARLO
MOSCOW
DUBAI
NEW YORK
CHICAGO
SAN FRANCISCO
BEVERLY HILLS
ASPEN
BAL HARBOUR
PALM BEACH
HONG KONG
SEOUL
TOKYO
OSAKA
NAGOYA



Tulle bracelet . Page 9

Tulle bracelet, Mario Buccellati (1925)
Flexible silver bracelet with lining in yellow gold.
30 brilliant-cut diamonds cts. 3,20
1.512 rose-cut diamonds cts. 14,0



Necklace . Page 13

Necklace in yellow gold with drops, hammered engraved and set with rose-cut diamonds.
The necklace is composed of 33 bezels set with rose-cut diamonds, linked to one another by a motif with two bezels and rose-cut diamonds. Enhanced by 21 triangular shapes, rouches-modeled, with triangular diamonds and pendant drop-shaped modeled frames with rose-cut diamonds.

48 rose-cut diamonds cts. 15,62
21 triangular rose-cut diamonds cts. 16,25
15 briolette diamonds cts. 12,52



Bib necklace and pendant earrings . Page 14

Bib necklace with white gold leaves with openwork venations and set with rose-cut diamonds. Yellow gold stems, "rigato" engraved. Yellow gold cups formed of leaves set with rose-cut diamonds and drop-shaped grey pearls. The back part is formed of white gold leaves set with rose-cut diamonds and yellow gold stems.

5 drop-shaped pearls cts. 206,21
4 pearls cts. 107,05
261 rose-cut diamonds cts. 10,18

Pendant earrings with white gold leaves with openwork venations and set with rose-cut diamonds. Engraved morettes and "rigato" engraved stems in yellow gold. The yellow gold cup is formed of leaves, set with rose-cut diamonds, and furtherly enhanced with a drop-shaped grey pearl.

54 rose-cut diamonds cts. 3,79
2 drop-shaped pearls cts. 65,86



Pendant earrings . Page 15

Pendant earrings with a superior round element in white gold set with brilliant-cut diamonds, enhanced by yellow gold leaf-modeled sections. The same motif for the pendant part, centering a pearl and detachable.

2 pearls cts. 47,49
172 round brilliant-cut diamonds cts. 4,66



Bracelet . Page 16

Flexible bracelet with rhomboidal and triangular shapes set with brilliant-cut diamonds alternating with bezels in white gold set with brilliant-cut diamonds. Yellow gold sections with modeled leaves running after each other divide the border with white gold double leaves set with brilliant-cut diamonds from the central part. Shiny beads in yellow gold.

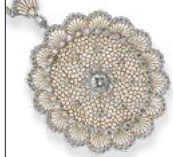
475 round brilliant-cut diamonds cts. 16,52



Necklace . Page 17

Necklace in white gold with inner double diverging leaves set with brilliant-cut diamonds, a yellow gold section with modeled leaves running after each other and outer rhomboidal and triangular shapes set with brilliant-cut diamonds. Garland-like borders in white gold and diamonds. Shiny beads in yellow gold.

756 round brilliant-cut diamonds cts. 33,76



Honeycomb brooch/pendant . Page 18

Oval tulle brooch centering a round white gold bezel set with a diamond and shapes in white gold set with brilliant-cut diamonds. Garland-shaped white gold border set with brilliant-cut diamonds.
Bilière in yellow gold with white gold border set with brilliant-cut diamonds.

154 round brilliant-cut diamonds cts. 3,14



Bracelet and pendant earrings . Page 19

Bangle tulle bracelet in yellow gold with white gold rosettes set with brilliant-cut diamonds, centering white gold leaf-modeled bezels set with a diamond. The tulle surface is dotted with white gold bezels, "rigato" engraved" set with brilliant-cut diamonds. Garland-shaped white gold borders set with brilliant-cut diamonds.

Band width cms. 4,45.
603 round brilliant-cut diamonds cts. 17,49

Tulle pendant earrings in yellow gold, with drop-shaped pendant. In the center, small leaves set with diamonds. Leaf-modeled white gold borders set with brilliant-cut diamonds. The pendant part is detachable.

34 round brilliant-cut diamonds cts. 1,46



Bracelet . Page 20

Bangle bracelet in openwork white gold, with leaves set with brilliant-cut diamonds in the central part. Along the borders, groups of four leaves in white gold, with brilliant-cut diamonds and a central yellow gold bead, alternating with engraved yellow gold morettes. Sections and borders in leaf-modeled white gold.

Band width cms. 3,50.
248 round brilliant-cut diamonds cts. 13,01



Bracelet . Page 21

"Valenciennes" flexible bracelet in honeycomb yellow gold, with white gold leaf and floral motifs set with brilliant-cut diamonds. White gold borders with yellow gold curls.

Length cms. 18,0, band width cms. 4,2.
1.464 round brilliant-cut diamonds cts. 8,48



Necklace . Page 22

Stiff necklace in honeycomb white gold with flower-shaped appliques and triangles on the borders, all set with brilliant-cut diamonds.

211 round brilliant-cut diamonds cts. 9,72



Bracelet . Page 23

"Renaissance" bracelet in honeycomb white gold, centering some leaf motifs set with brilliant-cut diamonds and decorations along the borders, set with brilliant-cut diamonds. Sections and borders with leaves running after each other.

Band width cms. 4,40.
474 round brilliant-cut diamonds cts. 7,66



Cocktail rings . Page 24

Cocktail ring in yellow and white gold, centering an oval bezel in yellow gold set with an aquamarine. Bombé scalar stem in white gold with a yellow gold insertion, "ornato" engraved.

48 fancy diamonds cts. 1,02
112 round brilliant-cut diamonds cts. 2,25
1 faceted aquamarine cts. 22,60

Cocktail ring centering an octagonal yellow gold bezel set with an olivine. Yellow gold rouches-modeled border, "rigato" engraved. Shiny beads in yellow gold. Scalar stem in yellow and white gold.

42 round brilliant-cut diamonds cts. 0,60
1 faceted olivine cts. 8,34

Cocktail ring in openwork yellow gold set with yellow fancy diamonds, centering an oval bezel set with a spessartine. Round bezels in red gold set with tzavorites. Shiny beads in red gold. Classic stem in yellow gold, "ornato" engraved, with a white gold insertion.

10 faceted tzavorites cts. 1,31
20 yellow fancy diamonds cts. 0,87
1 faceted spessartine cts. 14,19



Cocktail rings . Page 25

Cocktail ring in yellow gold set with rose-cut diamonds, centering an openwork cup in yellow gold set with a baroque pearl. Scalar bombé stem in yellow gold, "ornato" engraved.

60 rose-cut diamonds cts. 8,38
1 baroque pearl cts. 40,86

Cocktail ring in tulle yellow gold, with appliques in white gold set with brilliant-cut diamonds. Centering a pink gold griffe set with a tourmaline, contoured by white gold shapes set with brilliant-cut diamonds. White gold stem with bombé ashlar.

1 faceted tourmaline cts. 51,02
168 round brilliant-cut diamonds cts. 1,07



Pendant brooch . Page 26

Necklace with elements in white gold set with brilliant-cut diamonds and yellow gold set with yellow fancy diamonds, laterally "rigato" engraved, alternating with bezels set with diamonds. A bezel with a diamond renders the pendant detachable to become a brooch, centering a yellow gold bezel set with an emerald, contoured by yellow gold elements set with yellow fancy diamonds. Border composed of navette-shaped bezels set with diamonds.

201 round brilliant-cut diamonds cts. 10,03
12 navette-cut diamonds cts. 2,42
1 round faceted emerald cts. 25,18
208 yellow fancy diamonds cts. 2,04



Cocktail pendant earrings . Page 27

Pendant earrings with white gold leaves set with brilliant-cut diamonds and yellow gold bezels on openwork surface set with rose-cut diamonds. Shiny beads in yellow gold. The pendant part is drop-shaped, centering a yellow gold bezel set with an aquamarine. The pendant part is detachable.

416 round brilliant-cut diamonds cts. 4,70
34 rose-cut diamonds cts. 5,96
2 faceted aquamarines cts. 28,21



Tulle Eternelle rings . Page 28

"Ornato" Eternelle ring in honeycomb white gold, with appliqués set with brilliant-cut diamonds. Icona Collection.
88 round brilliant-cut diamonds cts. 0,50/0,55

Eternelle tulle ring in yellow gold, with clouds and borders in white gold set with brilliant-cut diamonds.
147 round brilliant-cut diamonds cts. 1,11

Eternelle tulle ring in yellow gold with flower-shaped appliqués formed of four white gold bezels set with brilliant-cut diamonds. Rouches-modeled on the edges and shiny beads in yellow gold.
144 round brilliant-cut diamonds cts. 0,97



"Nature" style rings . Page 29

Eternelle ring in openwork white gold with two rows of leaves alternating with a white gold blossom with a white gold morette. Trunk in modeled white gold. Leaf-modeled white gold border. Burnished finishing.
16 rose-cut diamonds cts. 0,90

Eternelle ring in openwork white gold with three rows of campanulas set with brilliant-cut diamonds and modeled curls. Leaf-modeled border in yellow gold. Burnished finishing.
30 rose-cut diamonds cts. 1,06

"Ramage" Eternelle ring in white gold formed of leaves set with brilliant-cut diamonds and rouches-modeled scalloped borders in white gold. Shiny beads in white gold. Icona Collection.
24 round brilliant-cut diamonds cts. 0,65/0,70

Eternelle ring in openwork yellow gold set with brilliant-cut diamonds and rouches-modeled white gold border. Shiny beads in white gold.
42 round brilliant-cut diamonds cts. 0,90



Cuff bracelets –"Silk" style . Page 30

Cuff bracelet in white gold, "rigato" engraved, with central rhomboidal elements in yellow gold set with brilliant-cut diamonds and rouches-modeled borders, centering a white gold bezel set with a brilliant-cut diamond. Along the borders, rouches-modeled rosettes with white gold bezels set with brilliant-cut diamonds. Shiny beads in yellow gold.
Band width cms. 4,0
99 round brilliant-cut diamonds cts. 1,22

Bombé cuff bracelet in yellow gold, "rigato" engraved. Three central rosettes in openwork white gold set with rose-cut diamonds, laterally "rigato" engraved and contoured by an "ornato" engraving, centering oval white gold bezels set with rose-cut diamonds.
Band width cms. 3,0.
103 rose-cut diamonds cts. 3,38

Bombé cuff bracelet in white gold, "rigato" engraved. Rosettes in openwork white gold set with brilliant-cut diamonds centering modeled bezels set with a diamond.
Band width cms. 3,0.
109 round brilliant-cut diamonds cts. 2,52



Cuff bracelets –"Silk" style . Page 31

Bombé cuff bracelet in yellow gold, "rigato" engraved with rhomboidal appliqués in white gold set with brilliant-cut diamonds centering shiny beads in yellow gold. Appliqués are in three rows. Alternating with shiny beads in white gold. Band width cms. 4,0.
76 round brilliant-cut diamonds cts. 1,76

Bombé cuff bracelet in white gold, "rigato" engraved, with rosettes in yellow gold and white bold bezels set with brilliant-cut diamonds. Shiny beads in yellow gold. Band width cms. 2,50.
23 round brilliant-cut diamonds cts. 1,03



Cuff bracelet "Silk" style . Page 31

Bombé cuff bracelet in yellow gold, "rigato" engraved, with star-shaped rosettes in white gold set with brilliant-cut diamonds, laterally "rigato" engraved and with modeled white gold central bezels set with brilliant-cut diamonds. Alternating with white gold modeled bezels set with brilliant-cut diamonds and shiny beads in white gold.
Band width cms. 2,50.
109 round brilliant-cut diamonds cts. 2,06



Icona Collection . Page 32

"Classica" earrings in yellow gold, radially "rigato" engraved, set with brilliant-cut diamonds.
4 round brilliant-cut diamonds cts. 0,35

"Macri" Eternelle rings in yellow, white and pink gold, "rigato" engraved, set with brilliant-cut diamonds.
6 round brilliant-cut diamonds cts. 0,24

"Macri" pendant earrings in white gold, radially "rigato" engraved, with yellow gold rosettes set with brilliant-cut diamonds. Shiny beads in yellow gold.
8 round brilliant-cut diamonds cts. 0,22



Icona Collection . Page 33

"Macri" cuff bracelets in yellow, white and pink gold, "rigato" engraved with rosettes of contrasting gold color set with brilliant-cut diamonds.
7 round brilliant-cut diamonds cts. 0,75

"Classica" cuff bracelets in yellow, pink and white gold, "rigato" engraved with white gold bezels contoured by an "ornato" engraving. Set with brilliant-cut diamonds.
10 round brilliant-cut diamonds cts. 0,50



Icona Collection . Page 35

"Rombi" pendant earrings in honeycomb white and yellow gold, set with brilliant-cut diamonds.
46 round brilliant-cut diamonds cts. 1,20/1,25

"Rombi" pendant in honeycomb white and yellow gold with chain, set with brilliant-cut diamonds.
22 round brilliant-cut diamonds cts. 0,40/0,45



"Ramage" pendant with white gold leaves set with brilliant-cut diamonds and leaf-modeled yellow gold borders, with chain.
14 round brilliant-cut diamonds cts. 0,40/0,45

"Ramage" pendant earrings with white gold leaves set with brilliant-cut diamonds and leaf-modeled yellow gold borders.
42 round brilliant-cut diamonds cts. 1,20/1,25



Icona Collection . Page 36

"Hawaii" necklace in yellow gold, finely engraved.

"Hawaii" pendant earrings in yellow gold, finely engraved.



Icona Collection . Page 37

"Honolulu" necklace in yellow, pink and white gold, finely engraved.

"Honolulu" pendant earrings in yellow, pink and white gold, finely engraved.




Band rings . Page 38

Ring in openwork white gold with rhombs and triangles set with brilliant-cut diamonds. The rear part of the band is "ornato" engraved with stars. Central oval bezel in yellow gold set with a ruby. Scalloped border in white gold and shiny beads in yellow gold.
1 oval faceted ruby cts. 0,99
94 round brilliant-cut diamonds cts. 0,36

Ring with three central white gold bezels set with brilliant-cut diamonds contoured by a rosette in rouches-modeled yellow gold. White gold border set with brilliant-cut diamonds, laterally "rigato" engraved. Scalar stem in white gold with central part in yellow gold, rouches-modeled. Shiny beads in white gold.
17 round brilliant-cut diamonds cts. 1,84

Ring in white gold with an openwork upper part with two white gold bezels set with brilliant-cut diamonds and a central yellow gold bezel set with an emerald. The back part of the band is in white gold, "rigato" engraved and "ornato" engraved tips. Yellow gold rouches-modeled yellow gold border and shiny beads.
26 round brilliant-cut diamonds cts. 0,72
1 oval faceted emerald cts. 0,77

Ring in openwork white gold with rhombs and triangles set with brilliant-cut diamonds, centering an oval bezel in pink gold set with a pink topaz. Scalloped border in white gold, rouches-modeled on the back. Shiny beads in yellow gold.
94 round brilliant-cut diamonds cts. 0,38
1 faceted topaz cts. 1,41




Band rings . Page 39

Eternelle ring in yellow gold set with rubies and emeralds, with appliqués in white gold set with brilliant-cut diamonds alternating with yellow gold beads. Detached border in white gold formed of campanulas set with brilliant-cut diamonds.
65 round brilliant-cut diamonds cts. 1,37
52 round faceted rubies cts. 1,17
26 round faceted emeralds cts. 0,47

Eternelle ring in yellow gold, "rigato" engraved, with borders composed of rouches-modeled triangular shapes. Band width cms. 1,40.

Bombé band ring in yellow gold, radially "rigato" engraved. Rosette on openwork basis in white gold set with brilliant-cut diamonds. Shiny beads in yellow gold.
15 round brilliant-cut diamonds cts. 0,46

"Rombi" Eternelle ring in white gold, with three rows of rhombs set with brilliant-cut diamonds and modeled scalloped borders in yellow gold. Icona Collection.
42 round brilliant-cut diamonds cts. 1,00



"Animalier" brooches . Page 40

Bear brooch in white gold set with brilliant-cut diamonds. Engraved muzzle and eyes with rubies. "Sfumato" engraved on the back and under the paws. Centrally, a baroque pearl.
2 round faceted rubies cts. 0,01
1 baroque pearl cts. 34,90
513 round brilliant-cut diamonds cts. 4,42

Lion brooch in yellow gold, "sfumato" engraved, with central baroque pearl, white gold mane set with brilliant-cut diamonds and laterally "rigato" engraved. Muzzle in yellow gold and eyes with yellow fancy diamonds. Tail in yellow gold with white gold tip, "rigato" engraved.
1 baroque pearl cts. 23,74
2 yellow fancy diamonds cts. 0,02
103 round brilliant-cut diamonds cts. 0,56

Sitting Rabbit brooch in white gold, centering a baroque pearl. Head and ears in white gold, set with brilliant-cut diamonds, eye with a ruby. Back, paws and tail in white gold set with brown diamonds.
312 round brilliant-cut diamonds cts. 1,73
1 round faceted ruby cts. 0,01
1 baroque pearl cts. 28,59



Pendant/brooch and necklace . Page 41

Oval brooch composed to a central yellow gold griffe set with a spessartine, contoured by yellow gold shapes set with yellow fancy diamonds, furtherly enhanced by some white gold ashlars set with brilliant-cut diamonds and a yellow gold border.
305 round brilliant-cut diamonds cts. 2,88
1 faceted spessartine cts. 50,86
149 fancy yellow diamonds cts. 1,80


Necklace with openwork elements set with brilliant-cut diamonds. Flaps in yellow gold set with yellow fancy diamonds, laterally "rigato" engraved, alternating with white gold bezels set with yellow fancy diamonds.
539 round brilliant-cut diamonds cts. 4,88
285 yellow fancy diamonds cts. 6,64



Set of necklace and earrings . Page 42


Necklace composed of yellow gold cups with two rows of rouches and set with baroque pearls, alternating with white gold scalar bezels set with rose-cut diamonds.
84 rose-cut diamonds cts. 10,10
21 baroque pearls cts. 637,10

Earrings composed of yellow gold cups with two rows of rouches and set with baroque pearls. Scalar bezels in white gold set with rose-cut diamonds.
14 rose-cut diamonds cts. 0,84
2 baroque pearls cts. 74,39




Phoenix brooch . Page 43

Phoenix brooch with white gold feathers set with brilliant-cut and fancy diamonds. Body in openwork white gold set with brilliant-cut diamonds, centering a conglomerate of grey pearls, neck with diamonds, eye with ruby and crest with emeralds. Pendant formed of three levels of diamonds, set with a baroque pearl.
707 round brilliant-cut diamonds cts. 10,24
1 round faceted ruby cts. 0,02
26 round faceted emeralds cts. 0,20
1 pearl cts. 45,51
174 fancy diamonds cts. 4,90
1 conglomerate of pearls cts. 136,10



Ring . Page 45

Ring in gold and platinum-plated silver centering and old-cut diamond surrounded by brilliant- and rose-cut diamonds.
24 rose-cut diamonds cts. 0,20
6 brilliant-cut diamonds cts. 1,80
1 old-cut diamond cts. 2,00



Romanza Collection . Page 46

"Ginevra" tulle ring in white gold, with central diamond and appliqués in white gold set with brilliant-cut diamonds.
Round- or emerald-cut central diamond ranging from 1,20 to 1,50 carats

"Carlotta" openwork ring in white gold, with central engraved bezel set with a diamond and flower-shaped elements set with brilliant-cut diamonds. "Rigato" and "ornato" engraved band.
Round- or emerald-cut central diamond ranging from 1,20 to 1,50 carats



Romanza Collection . Page 47

"Isotta" openwork ring in white gold, with central diamond contoured by small bezels set with brilliant-cut diamonds and enhanced by three rows of brilliant-cut diamonds. Modeled stem.
Round- or emerald-cut central diamond ranging from 1,00 to 1,50 carats

"Bradamante" openwork ring in white gold, with three central diamonds and scalloped borders. Modeled stem.
Central diamond ranging from 0,50 to 1,20 carats



Romanza Collection . Page 48

"Titania" openwork ring in white gold, with central diamond and side decoration with three brilliant-cut diamonds. Leaf-modeled borders and "rigato" engraved stem.
Round- or emerald-cut central diamond ranging from 0,50 to 1,20 carats

"Antiope" openwork ring in white gold, with central diamond and side flower-shaped decorations set with brilliant-cut diamonds. "Rigato" engraved stem.
Round- or emerald-cut central diamond ranging from 0,50 to 1,20 carats




Romanza Collection . Page 49

"Beatrice" white gold ring, with central diamond surrounded by an "ornato" engraving. The surface is "rigato" engraved and modeled on the sides.
Round- or emerald-cut diamond ranging from 0,30 to 1,20 carats



Watch . Page 51

"Agalma Costa Smeralda" watch in white gold, manual stone setting, hand-engraving. Swiss quartz movement.
438 diamonds cts. 5,73
86 zavorites cts. 12,06




Watch . Page 52

"Elio Crans Montana" watch in yellow or white gold, manual stone setting, hand-engraving. Swiss quartz movement.
544 diamonds cts. 7,87




Watch . Page 53

"Milleluci" watch in white gold and diamonds., manual stone setting, hand-engraving.
Swiss quartz movement.
665 diamonds cts. 12,36



Watch . Page 54

"Venus" watch in white gold with diamonds, manual stone setting. Swiss quartz movement.
62 diamonds cts. 1,00



Watches . Page 55

"Agalma New York" watches in yellow and white gold with diamonds, manual stone setting, hand-engraving. Swiss quartz movement.
524 diamonds cts. 17,06



Cuff watches . Page 56

"Cleopatra Integrated" cuff watches in black and yellow gold with diamonds, hand engraving, mother of pearl dial, Swiss quartz movement with time corrector on case back.
32 diamonds cts. 0,72



Cuff watches . Page 57

"Nefertiti" cuff watches in yellow and white gold, radially "rigato" and "ornato" engraved, mother of pearl dial, Swiss quartz movement with time corrector on case back.
96 diamonds cts. 1,09




Watches . Page 58

"Agalma" watches, patterns "Fiorentino", "Damasco" and "Riccio", with different hand engravings, engraved dial, Swiss quartz movement.




Watches . Page 59

"Venus" watch in white gold with diamonds, manual stone setting, mother of pearl dial, Swiss quartz movement.
62 diamonds cts. 1,00



Watch . Page 61


"Ornatino" in pink and white gold, engraved. Alligator strap. Hand engraving. Swiss mechanical movement with automatic winding.



Watches . Page 62

"Ornatino" in yellow and white gold. Alligator straps. Hand engraving on the dial. Swiss mechanical movement with automatic winding.


"Ornatino" in pink and white gold, engraved. Alligator strap. Hand engraving. Swiss mechanical movement with automatic winding.



Watches . Page 63

"Apollo" in yellow gold, pyramid sapphire crystal anti-reflection, alligator strap, Swiss mechanical movement with automatic winding and Complicated module.


"Apollo" in yellow gold, pyramid sapphire crystal anti-reflection, alligator strap, Swiss mechanical movement with automatic winding and Big Date module.



Watches . Page 64

"Andro Chrono", sapphire crystal anti-reflection, Swiss mechanical movement with automatic winding and Complicated module or Big Date module.

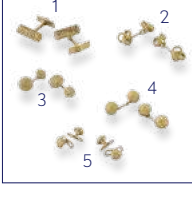
"Andro Chrono" in white gold with DLC finishing, sapphire crystal anti-reflection, Swiss mechanical chronograph movement with automatic winding.



Watches . Page 65

"Andro Chrono", sapphire crystal anti-reflection, Swiss mechanical movement with automatic winding and Complicated module or Big Date module.

"Andro Complicqué" in yellow gold, sapphire crystal anti-reflection, Swiss mechanical movement with automatic winding and Complicated module or Big Date module.



Cufflinks . Page 66

Cufflinks in yellow gold, composed of gold threads, intertwined and finely engraved.


1. "T"

2. "Nodini"

3. "Morette"

4. "Tennis" cufflinks

5. "Tennis" studs




Cufflinks . Page 67


1. Oval cufflinks with central oval white gold bezel set with a pink sapphire, contoured by yellow gold bezels set with pink sapphires, alternating with white gold bezels set with brilliant-cut diamonds. Yellow gold rouches-modeled scalloped borders. 44 round brilliant-cut diamonds cts. 0,77 24 pink sapphires cts. 6,22



3. Oval cufflinks with central yellow gold bezel, "rigato" engraved, set with a pearl, contoured by white gold bezels set with brilliant-cut diamonds. Leaf-modeled yellow gold borders. 46 round brilliant-cut diamonds cts. 0,74 2 nacre pearls cts. 1,85




4. Round cufflinks in silver set with sapphires, with burnished finishing. Yellow gold borders with engraving alternating with three beads. Radially "rigato" engraved on the back. 124 round faceted sapphires cts. 3,28




Silver . Page 68

Bull in sterling silver, executed with hair-like technique. Sizes: cms. 56x19 Height: cms. 38




Silver . Page 70

Short fighting cock in sterling silver, feather-like technique. Sizes: cms. 55x25 Height: cms. 29




Silver . Page 71

Standing fighting cock in sterling silver, feather-like technique. Sizes: cms. 50x35 Height: cms. 33



Silver . Page 72

Silver Jatte with Osmania pearls and malachites. Sizes: cms. 34,5x31 Height: cms. 12,2




Silver . Page 73

"Torsade" vases in sterling silver. Sizes: Base cms. 11,5x10,5 / Height cms. 22,5 Base cms. 14 / Height cms 31 Base cms. 11,5 / Height cms. 24,5




Silver . Page 74

"Fesonato" beaker in sterling silver. Sizes: Height cms. 17 "Anna d'Austria" beaker in sterling silver. Sizes: Height cms. 10 "Grande Imperiale" beaker in sterling silver. Sizes: Height cms. 19 "Venezia" beaker in sterling silver. Sizes: Height cms. 17 "Romanico" beaker in sterling silver. Sizes: Height cms. 18




Silver . Page 75

"Fesonato" beakers in sterling silver. Sizes: Height cms. 17 "Fesonato" carafe in sterling silver. Sizes: Height cms. 31




Silver . Page 76

Silver bowl with ashlar. Sizes: cms. 57,5x45 Height cms. 22,5




Silver . Page 77

Centerpiece with sterling silver fishes on a malachite basement. Sizes: cms. 41x33 Height cms. 34



Silver . Page 78

"Renaissance" frame in sterling silver. Sizes: cms. 23x38 Inside: cms. 13x18 "Veneziana" frame in sterling silver. Sizes: cms. 23x38 Inside: cms. 13x18 "Shells" frame in sterling silver. Sizes: cms. 16x20 Inside: cms. 8,5x12



Silver . Page 79

Frame in silver and rhodochrosites. Sizes: cms. 23x19 Inside: cms. 10x13,3




Silver . Page 80

Candelabra in sterling silver with leaves. Sizes: Diameter cms. 21 / Height cms. 49




Silver . Page 81

"Torchon" candlestick in sterling silver. Sizes: Diameter cms. 9 / Height cms. 22,5




Silver . Page 82

Fruit centerpiece in sterling silver. Sizes: cms. 56x39 / Height cms. 30



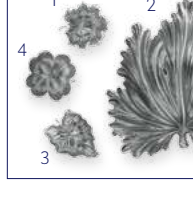
Silver . Page 83

"Piemontese" tea and coffee service in sterling silver. Milk jug – Sizes: diameter cms. 11 Height cms. 17 Sugar bowl – Sizes: diameter cms. 13 Height cms. 18 Coffee pot – Sizes: diameter cms. 15 Height cms. 33 Tea pot – Sizes: diameter cms. 17 Height cms. 29




Silver . Page 84

Schnautzer – Sizes: cms. 6,4x5,7 / Height cms. 12,3 Rabbit – Sizes: cms. 6,4x5,7 / Height cms. 12,3 Squirrel – Sizes: cms. 14,5x7 / Height cms. 13



Silver . Page 85

Leaf bowls in sterling silver. Various sizes. 1. Vine leaf 2. Clover 3. Arum 4. Acanthus




Silver . Page 86

Shell bowls in sterling silver. Various sizes. 1. Arca 2. Chlamys 3. Tridacna 4. Venus




Silver . Page 87

Fish centerpiece in sterling silver. Sizes: cms. 57x39 / Height cms. 33




Silver . Page 88

Jam jars in sterling silver and Murano glass. Apple – Sizes: diameter cms. 12 / Height cms. 13 Pineapple – Sizes: diameter cms. 10,5 / Height cms. 16 Peach – Sizes: diameter cms. 12 / Height cms. 13,5



Silver . Page 89

Jam jars in sterling silver and Murano glass. Lemon – Sizes: diameter cms. 11 / Height cms. 13 Plum – Sizes: diameter cms. 10,5 / Height cms. 16




Silver . Page 90

Tureen in shape of a Savoy cabbage, in sterling silver Sizes: diameter cms. 13,5 height cms. 10,7




Silver . Page 91

Sterling silver flowers collection. Various sizes. 1. Narcissus 2. Gardenia 3. Dahlia 4. Poppy 5. Pansy




Flatware . Pag 92

"Laura" pattern flatware, in sterling silver.




Flatware . Pag 94

"Borgia" pattern flatware, in sterling silver.



Flatware . Pag 95

"Esteval" pattern flatware, in sterling silver.




Flatware . Pag 96

"Empire" pattern flatware, in sterling silver.




Flatware . Pag 97

"Laura" pattern flatware, in sterling silver.




Flatware . Pag 98

"Milano" pattern flatware, in sterling silver.



Flatware . Pag 99

"Parma" pattern flatware, in sterling silver.



Flatware . Pag 100

"Versailles" pattern flatware, in sterling silver.



i-Pad cover . Pag 103

I-Pad cover in yellow gold, radially "rigato" engraved, with white gold suns set with brilliant-cut diamonds and small white gold bezels set with brilliant-cut diamonds. White gold borders. 196 round brilliant-cut diamonds cts. 2,78

